



# The Mill and Drill Newsletter

**Volume 5 Issue 1 August 1, 2010**

A product of TriMech Mfg. Inc. Located at 2522 Jefferson Highway Waynesboro, VA 22980

TriMech offices: Waynesboro, VA Richmond, VA Raleigh, NC Charlotte, NC Atlanta, GA Pittsburgh, PA Columbia, MD

DEAR CUSTOMER

Welcome to the August Issue of the Mill & Drill Newsletter.

## TRIMECH MFG. NEWS

### FeatureCAM 2011

As of right now, FeatureCAM 2011 is set to be released by the end of the summer. A lot of work has been put forward for this next release, and I'm really excited about what Delcam has to offer us this time around. Be on the lookout for some great enhancements to FeatureCAM.

### Updated Website

We are pleased to announce the unveiling of our finally updated website [www.trimechmfg.com](http://www.trimechmfg.com). Please browse around take advantage of the information we now have to offer. We hope to keep you up to date with what's going on at TriMech, updates about FeatureCAM, and any possible training dates you may be interested in. So check it out, you'll be glad you did.

### Training Anyone?

Don't forget that TriMech Mfg. is always available for training. So if business is slow, it might be a good time to get in here for some training. We still offer onsite training as well as training in one of our TriMech Offices. Give us a call so we can get you scheduled.

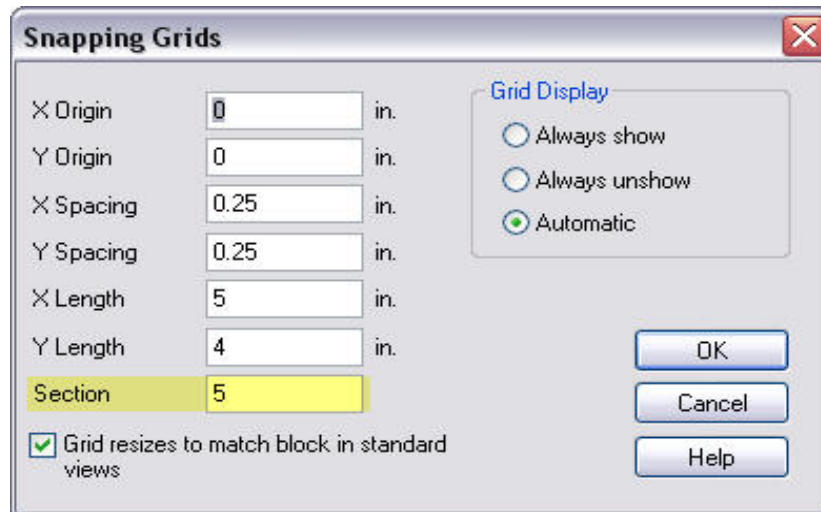
540.949.7703

### Newsletter Update

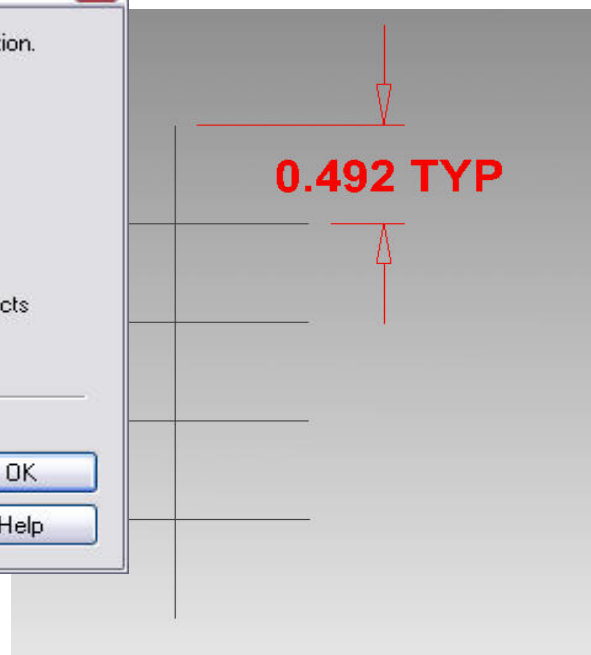
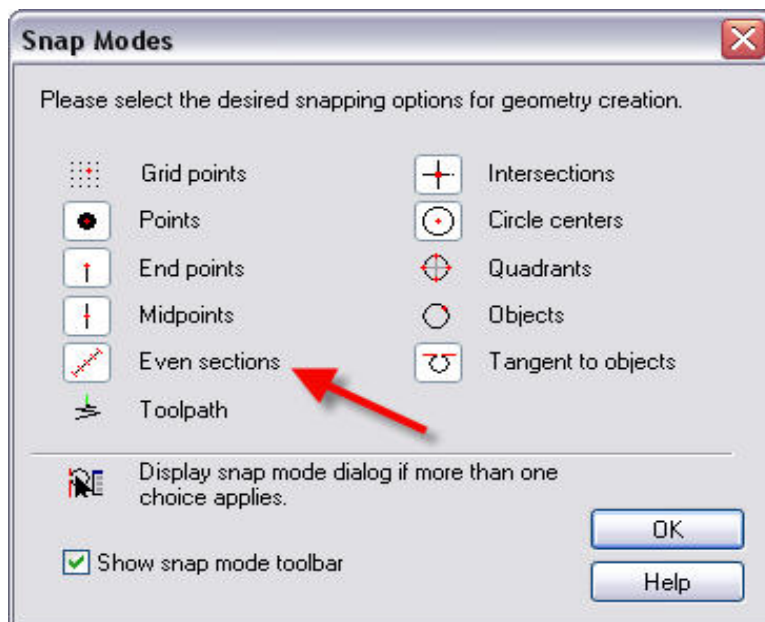
With the release of the new website, we will no longer be sending out our Newsletters via email; all our Newsletters will now be placed on the web for your convenience.

## Section Snap

One option in FeatureCAM may get overlooked and that's the Section Snap option when you are creating geometry. It's located under "Options-Snapping Grids".

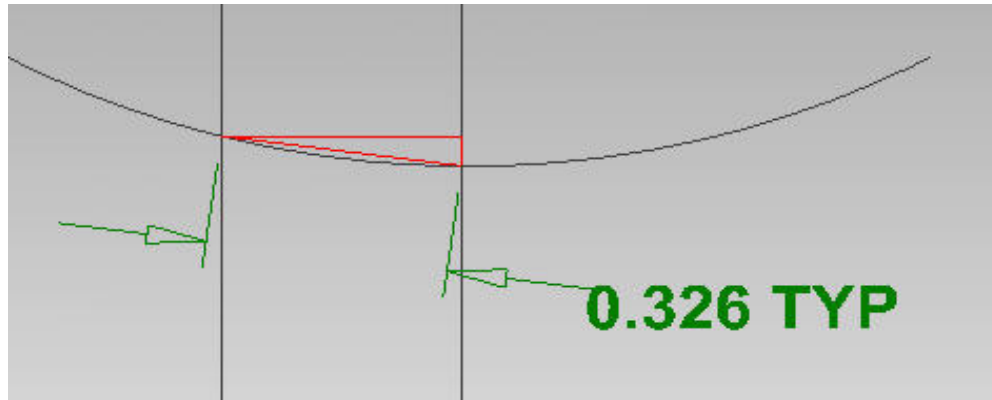


The above example has the "Section" set at 5. This will break up an individual piece of geometry into five segments of equal distance. To activate the section option, you must go to your Snapping Modes and make sure you have "Even sections" turned on.



Now while creating your geometry, you will have the option to snap to equal sections of existing lines of geometry.

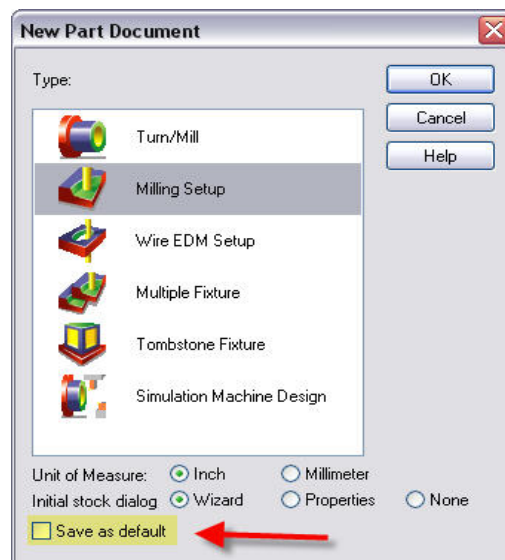
NOTE: Section snapping also works on geometry arcs, but the distance between the snap locations will be calculated as a linear distance (hypotenuse) between the points.



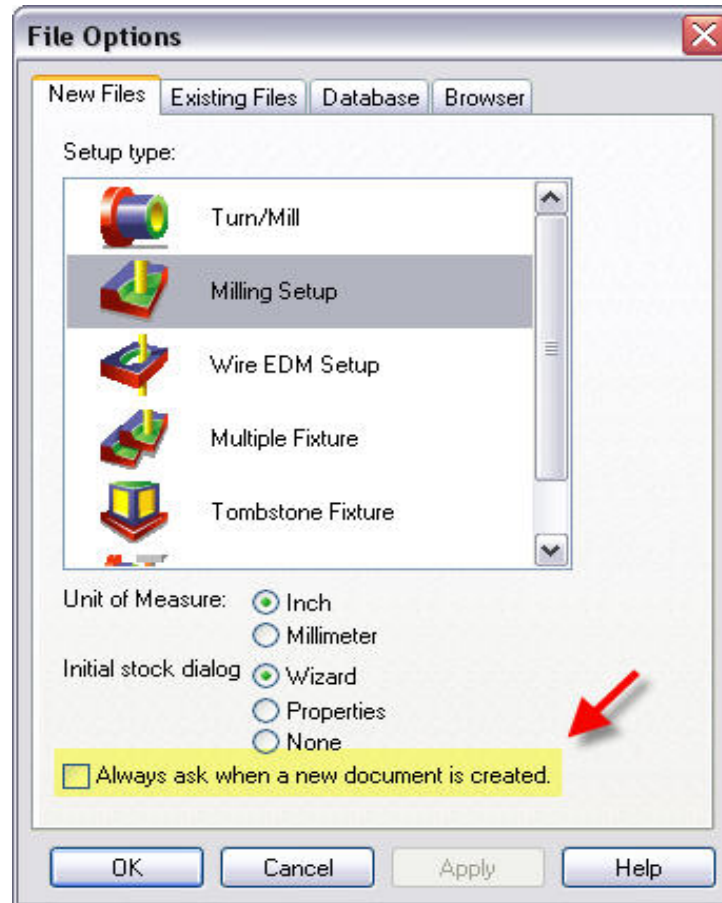
### Default for New Files

How many of us run through the same menus when we first begin a new file? We first tell FeatureCAM that we want to Mill in inches and that we want to use the Wizard, but if you do that each time, there is a way to have FeatureCAM remember what you want so you don't have to waste time going through the initial New File Wizard.

There are two places that you can set this to be a default each time you begin a new file. The first place is the very first page you get when you say "New File". Located at the bottom of this page you can set it to be your default.



The second location is under "Options-File Options". Simply check the appropriate defaults you would like to have and then check the box marked "Always ask when a new document is created".



### Customer Tips

We at TriMech Mfg. are always looking for new tips and tricks for our Newsletter. If you happen to run across something that may be helpful to others let us know, and we can place it in an up and coming Newsletter.

### QUESTIONS/COMMENTS?

Please send any Tips/Tricks, feedback, (regarding this newsletter) or requests to be added/removed from the distribution list to [jwk@trimech.com](mailto:jwk@trimech.com)